

# Report on Draft Supplementary Planning Guidance Note: Planning Obligations – adoption of final document

## Wellbeing Impact Assessment Report

This report summarises the likely impact of a proposal on the social, economic, environmental and cultural well-being of Denbighshire, Wales and the world.

Assessment Number:	84
Brief description:	Report on Draft Supplementary Planning Guidance Note: Planning Obligations – adoption of final document following consultation
Date Completed:	Version: 0
Completed By:	
Responsible Service:	Planning & Public Protection
Localities affected by the proposal:	Whole County,

# IMPACT ASSESSMENT SUMMARY AND CONCLUSION

Before we look in detail at the contribution and impact of the proposal, it is important to consider how the proposal is applying the sustainable development principle. This means that we must act "in a manner which seeks to ensure that the needs of the present are met without compromising the ability of future generations to meet their own needs."

## Score for the sustainability of the approach

Could some small changes in your thinking produce a better result?

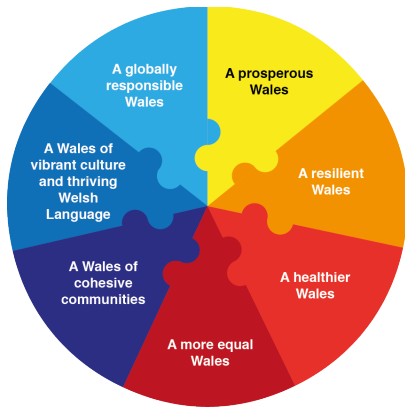
(3 out of 4 stars)



Actual score: 20/ 24.

## Summary of impact

Wellbeing Goals



A prosperous Denbighshire	Positive
A resilient Denbighshire	Positive
A healthier Denbighshire	Positive
A more equal Denbighshire	Positive
A Denbighshire of cohesive communities	Positive
A Denbighshire of vibrant culture and thriving Welsh language	Positive
A globally responsible Denbighshire	Neutral

## Main conclusions

# THE LIKELY IMPACT ON DENBIGHSHIRE, WALES AND THE WORLD

## A prosperous Denbighshire

Overall Impact:	Positive
Justification for Impact:	Guidance requires provision for pedestrians & cyclists in new development, contributions to public transport, to minimise reliance on private car and encourage sustainable transport. Guidance requires development of local employment/ training strategy for appropriate development proposals. Encourages developers to engage with Job Centre Plus to maximise opportunities for training & employment.

### **Positive consequences identified:**

Guidance requires provision for pedestrians & cyclists in new development, contributions to public transport, to minimise reliance on private car and encourage sustainable transport

Guidance requires development of local employment/ training strategy for appropriate development proposals. Encourages developers to engage with Job Centre Plus to maximise opportunities for training & employment

Guidance requires development of local employment/ training strategy for appropriate development proposals. Encourages developers to engage with Job Centre Plus to maximise opportunities for training & employment

Guidance requires development of local employment/ training strategy for appropriate development proposals. Encourages developers to engage with Job Centre Plus to maximise opportunities for training & employment

Guidance sets out requirements for highways mitigation requirements arising from development proposals

### **Unintended negative consequences identified:**

### **Mitigating actions:**

## A resilient Denbighshire

Overall Impact:	Positive
Justification for Impact:	Guidance provides framework for seeking developer provision or contributions in respect of the natural environment, sustainable transport & flood risk management, if required to mitigate the impact of development

### **Positive consequences identified:**

Developer provision or contributions in respect of the natural environment to mitigate the impact of development

Developer provision or contributions secured in respect of the built & natural environment to mitigate the impact of development

Sustainable transport, including cycle routes, footpaths, pedestrianisation provided as part of developments

Contributions secured towards flood risk management if required as mitigation for potential impacts of development

### **Unintended negative consequences identified:**

### **Mitigating actions:**

## A healthier Denbighshire

Overall Impact:	Positive
Justification for Impact:	Guidance provides framework for requiring open space, affordable housing, contributions to health and community & leisure facilities, community safety, streetscape improvements, Welsh language & culture, training & employment, sustainable transport where required to mitigate impact of development. All these can contribute to a healthier Denbighshire

### Positive consequences identified:

Open space & affordable housing provided as part of developments.

Contributions secured for health and community & leisure facilities, community safety, streetscape improvements, Welsh language & culture, training & employment, sustainable transport

Open space provided, contributions to community & leisure facilities secured where required to mitigate impact of development

Open space & affordable housing provided as part of developments, contributions secured for health and community & leisure facilities, community safety, streetscape improvements, Welsh language & culture, training & employment, sustainable transport where required to mitigate impact of development. All these can contribute to emotional & mental well-being

Contributions to health facilities where required to mitigate impact of development

### Unintended negative consequences identified:

### Mitigating actions:

## A more equal Denbighshire

Overall Impact:	Positive
Justification for Impact:	Guidance provides framework for requiring affordable housing, contributions to health and community & leisure facilities, training & employment, sustainable transport where required to mitigate impact of development.

### **Positive consequences identified:**

Guidance provides framework for requiring affordable housing, contributions to health and community & leisure facilities, training & employment, sustainable transport where required to mitigate impact of development.

Affordable housing provided, contributions to health and community & leisure facilities, training & employment, where required to mitigate impact of development.

Affordable housing, contributions to health and community & leisure facilities, training & employment, sustainable transport where required to mitigate impact of development.

### **Unintended negative consequences identified:**

### **Mitigating actions:**

## A Denbighshire of cohesive communities

Overall Impact:	Positive
Justification for Impact:	Guidance provides framework for requiring open space, contributions to health and community & leisure facilities, sustainable transport, natural & built environment, public art and streetscape improvements where required to mitigate impact of development.

### **Positive consequences identified:**

Guidance provides framework for requiring contributions to community safety where required to mitigate impact of development.

Guidance provides framework for requiring contributions to health and community & leisure facilities, sustainable transport where required to mitigate impact of development.

Guidance provides framework for requiring open space, contributions to public art & streetscape improvements, natural & built environment where required to mitigate impact of development.

### **Unintended negative consequences identified:**

### **Mitigating actions:**

## A Denbighshire of vibrant culture and thriving Welsh language

Overall Impact:	Positive
Justification for Impact:	Guidance provides framework for requiring contributions and mitigation measures where required to minimise impact of development on Welsh culture and language. Guidance proposes a range of potential measures

### **Positive consequences identified:**

Mitigation measures where required to minimise impact of development on Welsh culture and language.

Guidance proposes a range of potential measures

As above

As above

### **Unintended negative consequences identified:**

### **Mitigating actions:**



## A globally responsible Denbighshire

Overall Impact:	Neutral
Justification for Impact:	

### **Positive consequences identified:**

Guidance provides the framework for requiring training & employment contributions/ initiatives as part of development proposals - this could include local supply chain initiatives  
Assists with the contribution to wider housing & affordable housing targets

### **Unintended negative consequences identified:**

### **Mitigating actions:**